



PRODUCT BROCHURE RESIDENTIAL



HEAT PUMPS



AIR CONDITIONING



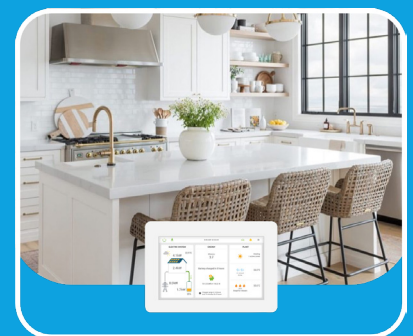
ENERGY STORAGE



AIR RENEWAL



FAN COILS

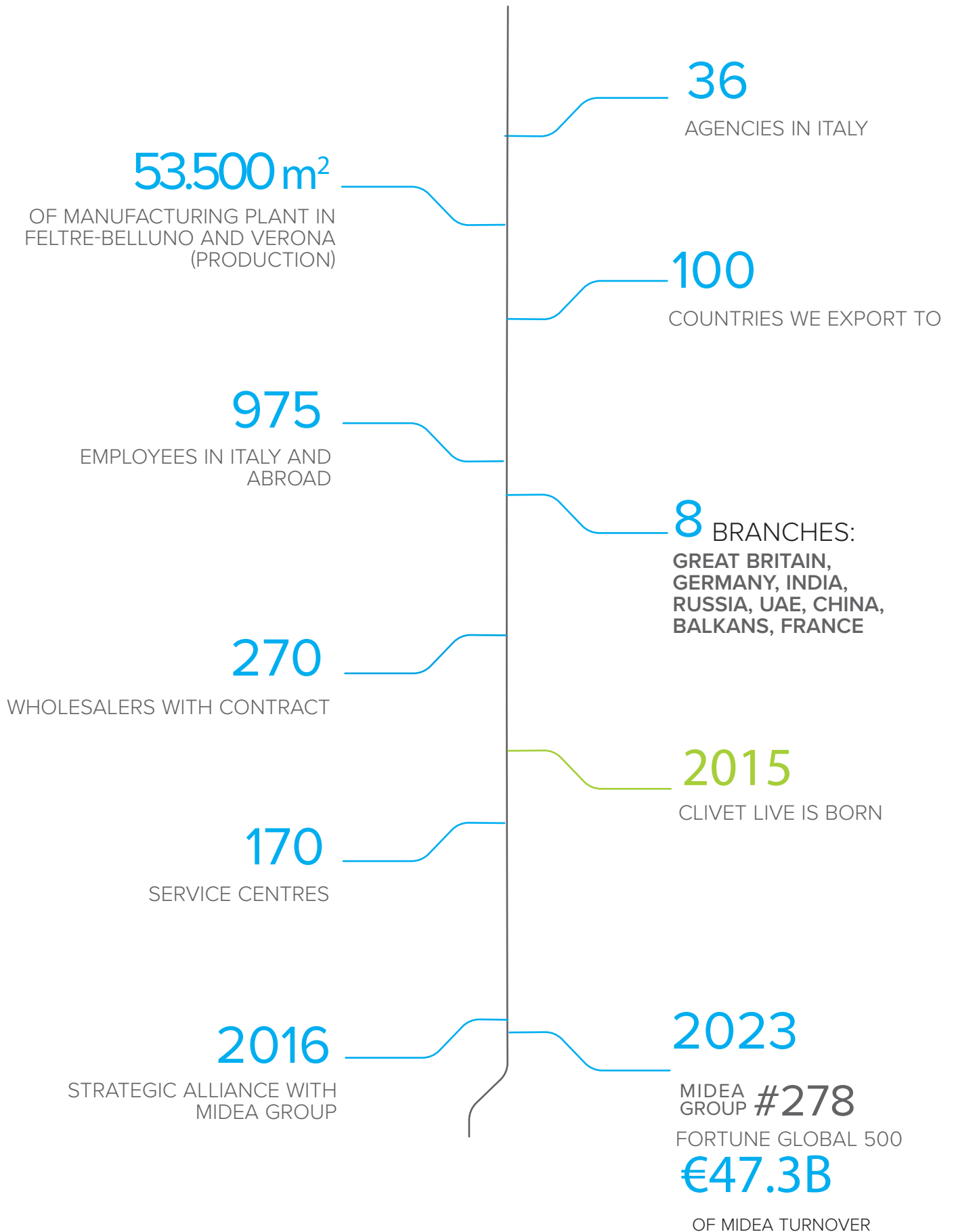


SMART CONTROL



Inspiring Solutions since 1989

COMPANY BY NUMBERS



THE COMPANY
ALWAYS READY
FOR THE FUTURE

INSPIRING SOLUTIONS

In over 30 years of working on the design, manufacturing and distribution of air conditioning and handling systems, combining high efficiency with minimal environmental impact, Clivet has developed solutions to ensure sustainable comfort and the well-being of people and the environment. Designing and developing year-round air conditioning solutions with innovative technologies are part of Clivet's DNA, which means the company has always been ready for the future.



COMFORT FOR THE PLANET & PEOPLE

OUR VALUES

IN THE RESIDENTIAL, COMMERCIAL
AND INDUSTRIAL SECTORS

Increasing comfort, saving energy and providing customers with the best value for the entire life cycle of the system: these are the values that inspire our systems for the residential, services and industrial sectors.

INCREASE
COMFORT
LEVEL

REDUCE
ENERGY
CONSUMPTION

REDUCE
TOTAL LIFE
CYCLE COST



SINERGY ESS

Electricity storage, to ensure maximum efficiency of independent supply during evening hours



HEAT PUMP

Smart modulation of the heat pump and domestic hot water tank charging based on the energy available from the photovoltaic system



GAS BOILER



AIR RENEWAL UNIT

Active thermodynamic recovery ventilation system to ensure the highest level of indoor air quality



CONTROL4 NRG

System energy assistant with electricity and thermal storage management. Remote automatic software updates to keep the system in line with new available functions



CLIVET EYE

Cloud solution for remote system control and management from a single App with display of energy levels produced and consumed by the home



SMART THERMOSTATS

These provide simple, intuitive and immediate access to the home system's main operating parameters (temperature and humidity, air quality, coil charge level, electricity produced by the photovoltaic system)



AIR QUALITY SENSOR

Acquisition of temperature, humidity, noise, VOC carbon monoxide, carbon dioxide and methane values



FAN COILS, RADIANT PANELS

Quiet, efficient fan coils, with slimline design and EUROVENT certification





EDGE EVO 2.0 EXC

EDGE EVO 2.0 EXC MONOBLOC UNITS

FROM 4 TO 30KW



- ✓ Providing heating, cooling & hot water for your home
- ✓ Harnessing renewable energy sources from the air
- ✓ Installed outdoors – no indoor unit needed
- ✓ Controllable via SmartHome App
- ✓ Ultra-efficient units work with lower energy usage – no additional cost
- ✓ Single fan up to 16kW
- ✓ Modular: combines up to 6 units in cascade
- ✓ Available single-phase from 4 to 16kW and three-phase from 12 to 30kW
- ✓ 4 to 16kW all Connect and Notify
- ✓ Super quiet in operation

Technical Specification

Size					2.1	3.1	4.1	5.1	6.1	7.1	8.1
Dimensions	LxHxW	mm			1.295x717x426				1.385x864x445		
Weight		kg			86		105		129		
Heating	Capacity	Water 35/30°C	Nominal / Maximum	kW	4,20 / 6,26	6,35 / 7,41	8,40 / 9,11	10,0 / 10,3	12,1 / 14,6	14,5 / 15,5	15,9 / 16,8
	COP	Outdoor air 7°C	Nominal	-	5,10	4,95	5,15	4,95	4,95	4,60	4,50
	Capacity	Water 35/30°C	Nominal / Maximum	kW	4,70 / 4,99	6,00 / 6,21	7,00 / 7,27	8,00 / 8,31	10,0 / 11,0	12,0 / 12,7	13,1 / 13,9
	COP	Outdoor air -7°C	Nominal	-	3,10	3,00	3,20	3,05	3,00	2,85	2,70
Sound power			Minimum / Nominal	dB(A)	53 / 55	55 / 58	54 / 59	55 / 60	59 / 65	59 / 65	59 / 68
Sound pressure @1m			Minimum / Nominal	dB(A)	39 / 41	41 / 44	40 / 45	40 / 46	44 / 50	44 / 50	44 / 53

Size					6.1T	7.1T	8.1T	9.1	10.1	12.1	14.1
Dimensions	LxHxW	mm			1.385x864x445			1.120x1.557x528			
Weight		kg			144			177			
Heating	Capacity	Water 35/30°C	Nominal / Maximum	kW	12,1 / 14,6	14,5 / 15,5	15,9 / 16,8	18,0 / 20,7	22,0 / 24,9	26,0 / 29,1	30,1 / 31,8
	COP	Outdoor air 7°C	Nominal	-	4,95	4,60	4,50	4,70	4,40	4,08	3,91
	Capacity	Water 35/30°C	Nominal / Maximum	kW	10,0 / 11,0	12,00 / 12,7	13,1 / 13,9	18,00 / 19,9	21,0 / 21,3	22,0 / 23,5	23,0 / 23,3
	COP	Outdoor air -7°C	Nominal	-	3,10	3,00	3,20	2,70	2,60	2,50	2,45
Sound power			Minimum / Nominal	dB(A)	59 / 65	59 / 65	59 / 68	63 / 70	62 / 72	70 / 74	73 / 77
Sound pressure @1m			Minimum / Nominal	dB(A)	44 / 50	44 / 50	44 / 53	48 / 55	46 / 56	54 / 58	57 / 61



EDGE EVO 2.0 HYBRID

**AIR-TO-WATER PACKAGED MONOBLOC HYBRID HEAT
PUMP IDEAL FOR UPGRADING OLD BOILERS**



- ✓ Does not need to be coupled to a hot water cylinder if DHW is produced by the boiler
- ✓ Can integrate with existing boilers
- ✓ £/Switch function: the unit simulates the operating conditions of the two generators and uses either a heat pump or a boiler depending on savings
- ✓ Management via the dedicated SmartHome App or via the Modbus port, both included as standard

Technical Specification

Size				2.1	3.1	4.1	5.1	6.1	7.1	8.1	
Dimensions	LxHxW	mm		1.295x717x426			1.385x864x445				
Weight		kg		86			105			129	
Heating	Capacity	Water 35/30°C	Nominal / Maximum	kW	4,20 / 5,33	6,35 / 7,41	8,40 / 9,11	10,0 / 10,3	12,1 / 14,6	14,5 / 15,5	15,9 / 16,8
	COP	Outdoor air 7°C	Nominal	-	5,10	4,95	5,15	4,95	4,95	4,60	4,50
	Capacity	Water 35/30°C	Nominal / Maximum	kW	4,70 / 4,99	6,00 / 6,21	7,00 / 7,27	8,00 / 8,31	10,0 / 11,0	12,0 / 12,7	13,1 / 13,9
	COP	Outdoor air -7°C	Nominal	-	3,10	3,00	3,20	3,05	3,00	2,85	2,70
Sound power			Minimum / Nominal	dB(A)	53 / 55	55 / 58	54 / 59	55 / 60	59 / 65	59 / 65	59 / 68
Sound pressure @1m			Minimum / Nominal	dB(A)	39 / 41	41 / 44	40 / 45	40 / 46	44 / 50	44 / 50	44 / 53

Size				FE 24.4		FE 33.4	
Dimensions	LxHxW	mm		420x700x250		420x700x320	
Weight		kg		27		31	
Heating	Heating capacity (Pn) P.C.I.	Water 80/60°C	Water content	kW	24,0	34,0	
			Minimum	kW	4,70	4,90	
	Efficiency	Water 50/30°C	Water content	kW	26,0	37,0	
			Minimum	kW	5,20	5,40	
	30% di Pn	Water 80/60°C	Maximum	%	97,8	97,7	
			Minimum	%	97,6	97,2	
Nominal	Water 50/30°C	Maximum	%	106,1	106,2		
		Minimum	%	107,3	107,1		
Sound power				%	109,7	109,7	
				dB(A)	49	52	

EDGE F

AIR-TO-WATER PACKAGED UNIT HEAT PUMP FOR HEATING, COOLING AND DOMESTIC HOT WATER PRODUCTION



- ✓ R-290 technology: combines high performance with full respect for the environment
- ✓ Space saving: installed outdoors, no indoor unit is required
- ✓ Renovation is easy: supply temperature up to 75 °C, perfect for any distribution system
- ✓ Modular: combines up to 6 units in cascade
- ✓ Advanced connectivity: management via the Clivet Eye App or via the Modbus port with Control4 NRG
- ✓ Single fan up to 15kW

Technical Specification

Size				2.1		3.1		4.1		5.1		6.1		7.1		8.1	
Dimensions	LxHxW	mm		1.295x718x381								1.385x865x423					
Weight		kg		90				117				135					
Heating	Capacity	Water 35/30°C	Nominal / Maximum	kW	4,50 / 6,86	6,20 / 7,70	8,40 / 10,4	10,0 / 11,0	12,0 / 14,7	14,0 / 16,0	15,0 / 17,6						
	COP	Outdoor air 7°C	Nominal	-	5,15	4,90	5,00	4,70	4,80	4,50	4,40						
	Capacity	Water 35/30°C	Nominal / Maximum	kW	4,50 / 5,56	5,90 / 6,18	7,00 / 8,74	8,00 / 8,89	10,0 / 11,1	11,5 / 12,1	12,7 / 13,2						
	COP	Outdoor air -7°C	Nominal	-	3,10	2,95	3,00	2,85	2,80	2,70	2,50						
Sound power			Minimum / Nominal	dB(A)	51 / 56	53 / 58	55 / 60	56 / 61	58 / 65	59 / 65	60 / 69						
Sound pressure @1m			Minimum / Nominal	dB(A)	40 / 44	42 / 46	42 / 48	43 / 49	43 / 51	44 / 52	48 / 56						

Size				6.1T		7.1T		8.1T	
Dimensions	LxHxW	mm				1.385x865x423			
Weight		kg				137			
Heating	Capacity	Water 35/30°C	Nominal / Maximum	kW	12,0 / 14,7	14,0 / 16,0		15,0 / 17,6	
	COP	Outdoor air 7°C	Nominal	-	4,80	4,50		4,40	
	Capacity	Water 35/30°C	Nominal / Maximum	kW	10,0 / 11,1	11,5 / 12,1		12,7 / 13,2	
	COP	Outdoor air -7°C	Nominal	-	2,80	2,70		2,50	
Sound power			Minimum / Nominal	dB(A)	58 / 65	59 / 65		60 / 69	
Sound pressure @1m			Minimum / Nominal	dB(A)	43 / 51	44 / 52		48 / 56	



EASYMini



WALL-MOUNTED INDOOR UNIT FOR HYDRO-SPLIT SYSTEMS

- ✓ Hydronic module ideal for small flats with 50 litre domestic hot water tank
- ✓ Can be combined with external monoblock heat pump from the Edge family
- ✓ Connected by hydraulic connections through which water flows
- ✓ Compact module

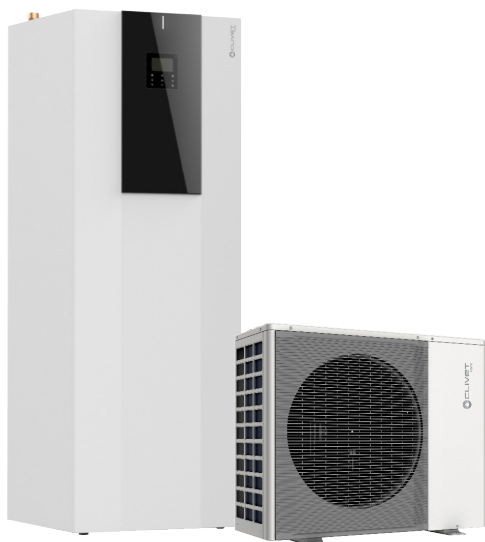
EDGE PRO



AIR-TO-WATER PACKAGED HEAT PUMP WITH NATURAL REFRIGERANT R-290 FOR HEATING, COOLING AND DOMESTIC HOT WATER

- ✓ Sound levels never seen on the market, with this series Clivet sets a new standard of quietness
- ✓ Presents Energy Class A+++
- ✓ The new ALTODesign aesthetic combines elegance and functionality
- ✓ 4 to 35 kW range and cascade configuration up to 6 units, making this product suitable for every type of installation

SPHERA EVO 2.0 TOWER



**SPLIT AIR TO WATER HEAT PUMP WITH DHW TANK
FOR HEATING COOLING AND DOMESTIC HOT WATER
PRODUCTION**

- ✓ From 4 to 16 kW
- ✓ Energy efficiency at the highest level
- ✓ Quiet operation
- ✓ Suitable for every need, thanks to the dual version with 190-litre or 250-litre DHW storage tank
- ✓ Compact outdoor unit requiring very little installation space
- ✓ Simultaneous system and DHW operation (Hybrid version)

Technical Specification

Size				2.1	3.1	4.1	5.1	6.1	7.1	8.1
Dimensions	Indoor unit ACS190	AxCxB	mm	600x1.774x615			-			
	Indoor unit ACS250	AxCxB	mm	-			600x2.084x615			
	Outdoor unit	AxCxB	mm	986x712x426			1.104x866x523			
Operating weight	Indoor unit ACS190		kg	359			-			
	Indoor unit ACS250		kg	419			421			
	Outdoor unit		kg	58		77			112	

Size - Set				2.1		3.1		4.1		5.1		6.1		7.1		8.1	
				190L	250L	190L	250L	190L	250L	190L	250L	250L	250L	250L	250L	250L	
Heating	Capacity	Water 35/30°C	Nominal / Maximum	kW		4,32 / 6,26	6,18 / 7,41	8,30 / 9,11	10,1 / 10,3	12,1 / 14,6	14,5 / 15,5	16,0 / 16,8					
		Outdoor air 7°C	Nominal	-		5,42	5,21	5,31	5,01	5,00	4,70	4,55					
	COP	Water 35/30°C	Nominal / Maximum	kW		4,17 / 6,25	6,05 / 6,97	7,33 / 8,35	8,20 / 9,30	10,5 / 13,9	12,2 / 14,1	13,4 / 14,3					
		Outdoor air -7°C	Nominal	-		3,16	3,00	3,23	3,07	3,13	2,82	2,74					
	Capacity	Water 45/40°C	Nominal / Maximum	kW		4,16 / 5,96	6,03 / 7,13	8,22 / 8,98	10,0 / 10,3	12,3 / 14,5	14,0 / 15,7	16,0 / 16,6					
		Outdoor air 7°C	Nominal	-		3,93	3,83	3,95	3,86	3,80	3,65	3,60					
Sound power			Nominal	dB(A)		41											
Sound pressure @1m			Nominal	dB(A)		26											
Size - Outdoor unit				2.1	3.1	4.1	5.1	6.1	7.1	8.1							
Power supply	Voltage/Frequency/Phases			V/Hz/n°		230/50/1											
Sound power			Minimum / Nominal	dB(A)		50 / 55	51 / 57	52 / 58	52 / 60	54 / 63	54 / 64	54 / 66					
Sound pressure @1m			Minimum / Nominal	dB(A)		37 / 42	38 / 44	39 / 45	39 / 47	41 / 50	41 / 51	41 / 53					



SPHERA EVO 2.0 BOX

**WALL-MOUNTED AIR-TO-WATER SPLIT HEAT PUMP
FOR HEATING, COOLING AND DOMESTIC HOT WATER
PRODUCTION**



- ✓ From 4 to 16 kW
- ✓ It does not need to be coupled to a boiler if DHW is produced by the boiler (Hybrid version)
- ✓ Energy efficiency at the highest level
- ✓ Quiet operation
- ✓ Can be combined with DHW tanks of a volume suitable for the application in which it is to be installed
- ✓ Up to 6 units can be connected in cascade, for demands up to 100 kW

Technical Specification

Size				2.1	3.1	4.1	5.1	6.1	7.1	8.1
Dimensions	Indoor unit	AxCxB	mm				547x604x386			
	Outdoor unit	AxCxB	mm	986x712x426						1.104x866x523
Weight	Indoor unit		kg				52		54	
	Outdoor unit		kg	58		77		112		

Size - Set				2.1	3.1	4.1	5.1	6.1	7.1	8.1
Heating	Capacity	Water 35/30°C	Nominal / Maximum	4,32 / 6,26	6,18 / 7,41	8,30 / 9,11	10,1 / 10,3	12,1 / 14,6	14,5 / 15,5	16,0 / 16,8
	COP	Outdoor air 7°C	Nominal	5,42	5,21	5,31	5,01	5,00	4,70	4,55
	Capacity	Water 35/30°C	Nominal / Maximum	4,17 / 6,25	6,05 / 6,97	7,33 / 8,35	8,20 / 9,30	10,5 / 13,9	12,2 / 14,1	13,4 / 14,3
	COP	Outdoor air -7°C	Nominal	3,16	3,00	3,23	3,07	3,13	2,82	2,74
	Capacity	Water 45/40°C	Nominal / Maximum	4,16 / 5,96	6,03 / 7,13	8,22 / 8,98	10,0 / 10,3	12,3 / 14,5	14,0 / 15,7	16,0 / 16,6
	COP	Outdoor air 7°C	Nominal	3,93	3,83	3,95	3,86	3,80	3,65	3,60

Size - Indoor unit				A				B		
Power supply	Voltage/Frequency/Phases			230/50/1						
Water flow-rate	Water 35/30°C	Nominal	l/s	0,21	0,30	0,41	0,49	0,57	0,67	0,75
Pump available pressure	Outdoor air 7°C	Nominal	kPa	31,2	36,5	33,1	31,0	25,7	31,7	22,6
Minimum system water content				l						
Expansion tank capacity				l						
Sound power	Nominal			dB(A)						
Sound pressure @1m	Nominal			dB(A)						

Size - Outdoor unit				2.1	3.1	4.1	5.1	6.1	7.1	8.1
Power supply	Voltage/Frequency/Phases			230/50/1						
Sound power	Minimum / Nominal			50 / 55	51 / 57	52 / 58	52 / 60	54 / 63	54 / 64	54 / 66
Sound pressure @1m	Minimum / Nominal			37 / 42	38 / 44	39 / 45	39 / 47	41 / 50	41 / 51	41 / 53



CRISTALLO 2

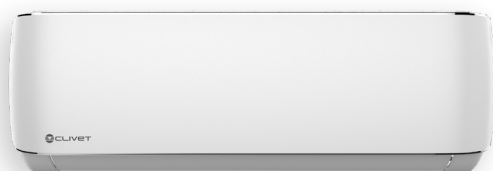
HIGH WALL INDOOR UNIT



- ✓ ALTO Design panel with strong and elegant lines, matt finished
- ✓ Purification filter: active against odours, dust, VOC, pollen, spores, bacteria
- ✓ Smart management as standard: via smartphone with the NetHome Plus App and voice control setup with Amazon Alexa and Google Assistant
- ✓ SINGLE Split and MULTI Split compatible

CRISTALLO

HIGH WALL INDOOR UNIT



- ✓ Full range: SINGLE Split 9.000 - 24.000 Btu/h, MULTI Split 9.000 - 24.000 Btu/h
- ✓ Smart management as standard - via smartphone with the NetHome Plus app and voice control setup with Amazon Alexa and Google Assistant
- ✓ Elegant design
- ✓ Multi-directional airflow, fully adjustable indoor fan speed
- ✓ SINGLE Split and MULTI Split compatible



NATIV

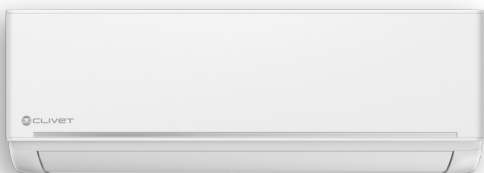
SINGLE SPLIT / MULTI SPLIT WITH HIWALL INDOOR UNIT



- ✓ Full range: SINGLE Split 9.000 - 24.000 Btu/h, MULTI Split 9.000 - 24.000 Btu/h
- ✓ SINGLE Split/MULTI Split Compatible
- ✓ Optional: Wi-Fi for the remote management with NetHome Plus application for Android and iOS

EZCool

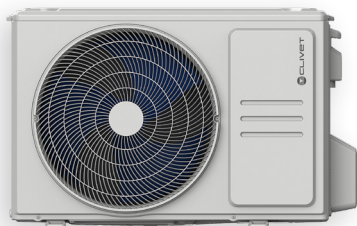
SINGLE SPLIT WITH HIWALL INDOOR UNIT



- ✓ Full range: SINGLE Split 9.000 - 24.000 Btu/h, MULTI Split 9.000 - 24.000 Btu/h
- ✓ Silent operation with low power consumption
- ✓ Optional: smart management via smartphone with the NetHome Plus app and voice control setup with Amazon Alexa and Google Assistant



SINGLE SPLIT



OUTDOOR UNIT FOR SINGLESplit SYSTEMS

- ✓ 6 product variations available in 4 sizes: 2.7kW, 3.5kW, 5.3kW or 7kW
- ✓ Compact size and easy to install
- ✓ Quiet operation and affordable

MULTI SPLIT



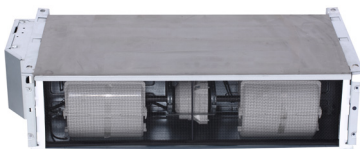
OUTDOOR UNIT FOR MULTISplit SYSTEMS

- ✓ From 1 to 5 connectable indoor units, also of different types
- ✓ Rapid installation: automatic correction of the connection errors
- ✓ Extremely extended operating ranges: Heating from -15°C to +24°C; Cooling -15°C to +50°C



AURA

FLOOR OR CEILING MOUNTED FAN COIL WITH INVERTER MOTOR



- ✓ Sleek and elegant design, suitable for blending into any environment
- ✓ Suitable for any installation: vertical or horizontal, cased or uncased
- ✓ Quiet and efficient, thanks to the fan's brushless DC motor
- ✓ Complete range: sizes from 1.5kW to 8.3kW, ideal for houses or hotel rooms
- ✓ Can be adapted on-site to have fittings on the right side as well
- ✓ Management via Modbus port with connection to BMS or Control4 NRG

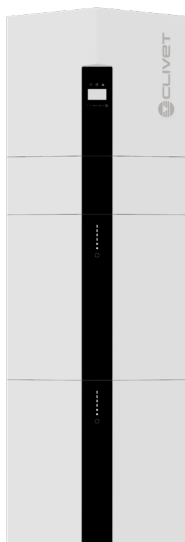
MOOD

WALL MOUNTED FAN COIL WITH INVERTER MOTOR FOR HEATING AND COOLING



- ✓ Standard supplied with 3-way ON/OFF valves and potential-free contact for generator demand
- ✓ Quiet and efficient, thanks to the fan's brushless DC motor
- ✓ Standard supplied infrared remote control
- ✓ Standard supplied input contact for 0-10V management
- ✓ Management via Modbus port with connection to BMS or Control4 NRG

Clivet SINERGY



HIGH PERFORMANCE ENERGY STORAGE SYSTEM AVAILABLE IN 4 SINGLE PHASE CAPACITIES FROM 5KWH TO 20KWH AND 4 THREE PHASE CAPACITIES FROM 10KWH TO 40KWH. HYBRID POWER INVERTER 5KW IN THE SINGLE-PHASE VERSION AND 10KW IN THE THREE-PHASE VERSION

- ✓ Ideal for small to large residential homes and businesses
- ✓ An all-in-one system allowing easy installation and reduced space requirements
- ✓ Extended temperature range of -25°C to 60°C, with IP65 degree of protection
- ✓ Off and on-grid function with integrated 4.6 kW on single-phase and 9.2 kW on three-phase back-up output for connecting loads in the event of a power failure
- ✓ Dual MPPT input for 6.5kW single-phase / 20kW three-phase photovoltaic system
- ✓ High reliability, with up to 10,000 charging/ discharging cycles

Technical Specification

BATTERY PACK TECHNICAL CHARACTERISTICS

Physical

Battery type	LFP (LiFeO4)
Weight	54 kg
Dimensions W x H x D	540 x 490 x 255 mm
IP protection	IP65
Warranty	10 years

Electrical Data

Energy capacity	5,12 kWh
Usable capacity	4,6 kWh
Depth of discharge (DoD)	0,9
Nominal Voltage	51,2 V
DC Circuit Breakers	125A
Operating Voltage Range	44,8 - 56,6 V
Internal Resistance	<20mΩ

INVERTER TECHNICAL CHARACTERISTICS

General Specifications - CEC-S 5K (single-phase)

Dimensions W x H x D	540 x 590 x 255 mm
Weight	32 kg
Operating Temperature Range	-25°C ~ +60°C
Humidity	0°C ~ 95% (non condensing)
Noise (dB)	<25

General Specifications - CEC-T 10K (three-phase)

Dimensions W x H x D	540 x 980 x 250 mm
Weight	54 kg
Operating Temperature Range	-25°C to +60°C, derating above 40°C
Humidity	0°C ~ 95% (non condensing)
Noise (dB)	<25



CONTROL4 NRG



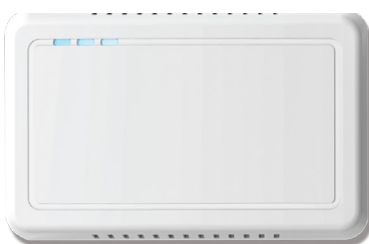
HOME AUTOMATION SYSTEM FOR SMART ENERGY AND COMFORT MANAGEMENT

- ✓ The heart of the home - a centralised Class A control system that gives you control of energy usage room by room
- ✓ Simultaneous management of up to 24 independent climate zones
- ✓ Integration with photovoltaic systems and with Clivet SINERGY energy storage system
- ✓ Ethernet and Wi-Fi connected with automatic updates



HID-TSmart COLOUR TOUCH THERMOSTAT

- ✓ Simple, intuitive and immediate access to the system's main operating parameters
- ✓ Combined with Control4 NRG, with the same device you can acquire different types of information from all the electrical elements in the home such as temperature, humidity, electricity consumption, electricity produced by the photovoltaic system, and the Clivet SINERGY energy storage charge level



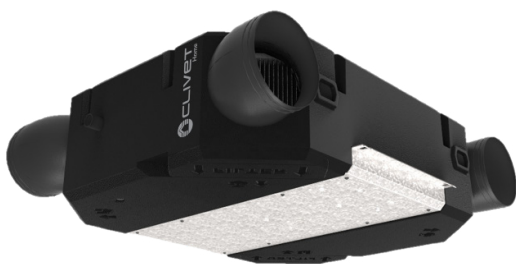
Z-IAQ AIR QUALITY SENSOR

- ✓ Measures temperature, humidity, noise, VOC, carbon monoxide, carbon dioxide and methane values
- ✓ Control4 NRG can then assess the air quality based on the parameters to show the air quality in the various environments.



ELFOFresh EVO

HEAT RECOVERY SYSTEM & AIR PURIFIER FROM 125 TO 320 M³/H



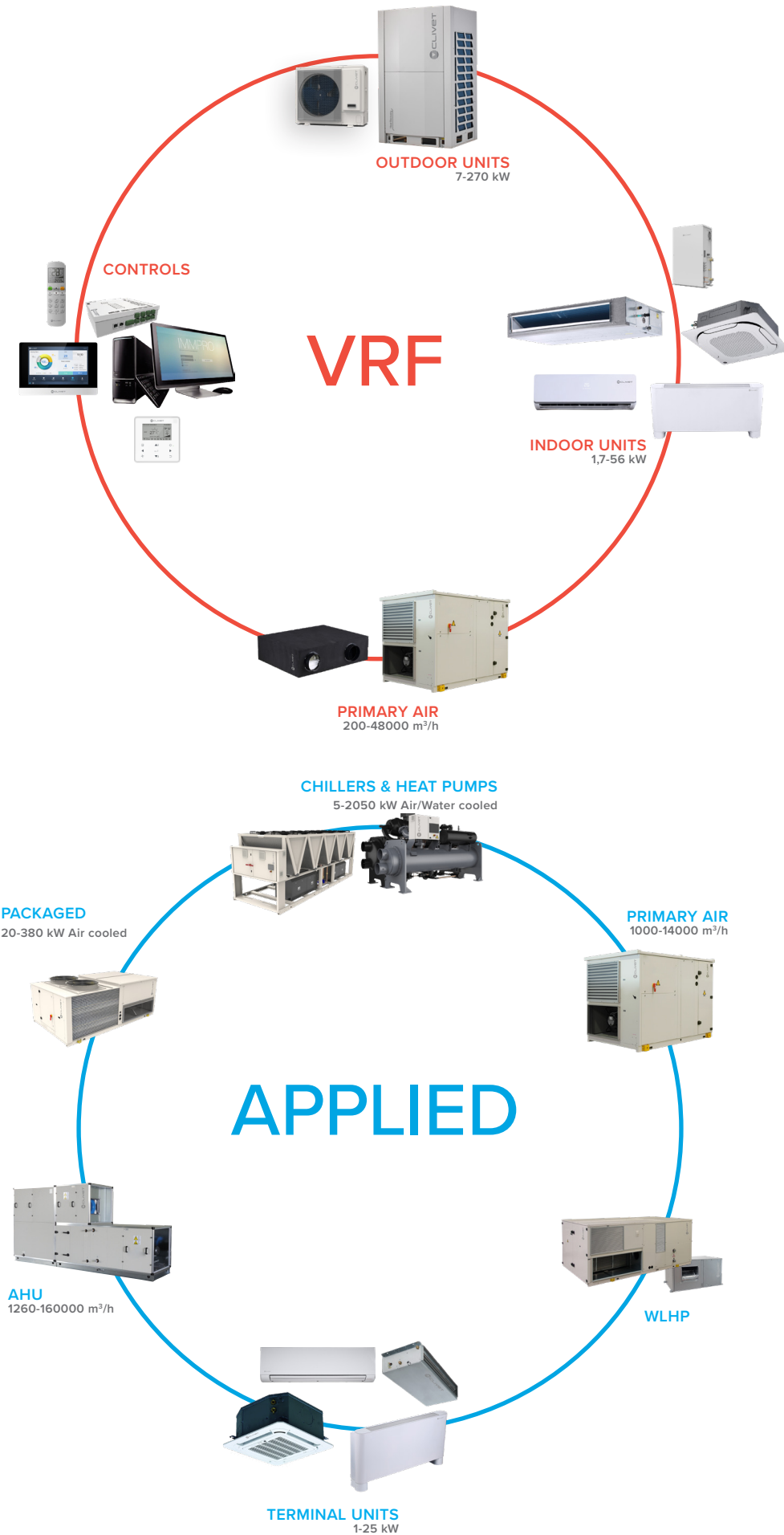
- ✓ Innovative heat recovery system that alone fulfils over 85% of the building demands
- ✓ Intake air humidity control
- ✓ Optional electronic filtration system purifies the air by removing dust, bacteria and pollen
- ✓ Advanced connectivity - intelligent control via app or via the Modbus port with Control4 NRG included as standard
- ✓ Ideal for flats and small residential properties

Technical Specification

Size		Size 2							
Dimensions	AxCxB	mm	1.107x290x900						
Weight		kg	44						
Size					Size 2				
			125	150	210	270	320		
Ventilation	Settable air flow		m ³ /h						
	Available pressure	Nominal / Maximum	Pa		50 / 120				
	Fresh Air	-	-		100%				
	Filters type	-	-		Folded filter				
Winter recovery	Filtration class	-	-		PM10 50%				
	Heating capacity	Ambient Air 20 °C/50% UR	kW		1,42	1,55	1,86	2,05	2,49
	COP	Outdoor air 7 °C/6°C WB	-		3,09	3,69	4,13	4,93	4,61
	Heating capacity	Ambient Air 20 °C/50% UR	kW		1,97	2,1	2,21	2,37	2,45
Summer recovery	COP	Outdoor air -5 °C/80% UR	-		4,93	4,04	4,7	6,5	7,66
	Cooling capacity	Ambient Air 26 °C/50% UR	kW		1,57	1,64	1,73	1,92	2,23
	EER	Outdoor air 35 °C/50% UR	-		4,34	3,15	3,26	3,5	2,77
	Electrical power for meter sizing		kW		1,08				
Power supply	Voltage/Frequency/Phases	V/Hz/n°		230/50/1					
Sound power		Minimum / Maximum	dB(A)		47 / 58				
Sound pressure @1 m		Minimum / Maximum	dB(A)		34 / 45				
Operating range									
Operating range (Indoor air)	Heating	Minimum / Maximum	°C		15 / 30				
	Cooling	Minimum / Maximum	°C		16 / 30				
Operating range (outdoor air)	Heating	Minimum / Maximum	°C		-20 ^{new} / 28				
	Cooling	Minimum / Maximum	°C		16 / 45				

Data according to EN 14511: 2018 and referred to available pressure of 50 Pa.

COMMERCIAL SOLUTIONS FROM CLIVET



FOR OVER 30 YEARS WE HAVE BEEN OFFERING
SOLUTIONS TO ENSURE SUSTAINABLE COMFORT
AND THE WELL-BEING OF PEOPLE AND THE
ENVIRONMENT

www.clivet.com



Clivet Group UK LTD
Units F5 & F6 Railway Triangle,
Portsmouth, Hampshire PO6 1TG
Tel. +44 02392 381235
Email: info.uk@clivet.com

MideaGroup
humanizing technology